

FTV 300
FTV 550

SPECIAL APPLICATIONS



MADE FOR YOUR MISSION

ROTOR BLADES TRANSPORTED SAFELY

The number of onshore and offshore wind farms for harvesting energy has been constantly increasing worldwide for many years. The installed capacity gained from wind energy doubled just between 2011 and 2016 around the world from 250 to 500 Gigawatts. In order to reach the increasingly powerful wind turbines, it is often necessary to cross narrow bends or pass through developed areas. Our blade-carrying transport devices, which can be combined with towed or driven heavy-duty modules, enable easy and economical transport to the construction sites – irrespective of how narrow it gets.

MANEUVERABLE AND FLEXIBLE

04

The FTV 300 comes into its own on mostly narrow route sections where conventional transport solutions quickly reach their limitations. With an alignment angle of up to 60°, even difficult passages can be effortlessly overcome and the rotor blades can thereby reach their planned destination safely and efficiently.



SAFE AND TRIED AND TESTED HUNDREDS OF TIMES

06

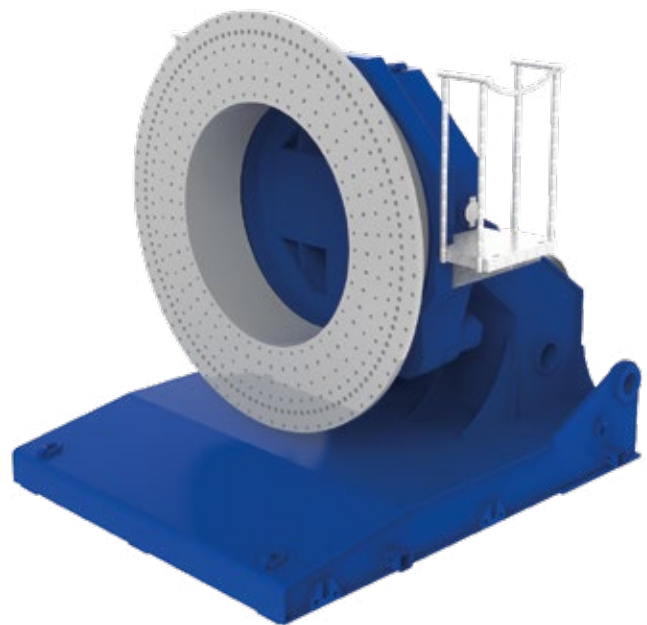
Goldhofer's FTV 550 takes the progressive development of wind turbines into account. The FTV 550 is able to accommodate even the largest rotor blades. The ingenious FTV 550 has already proven itself hundreds of times in practical situations for the transport of the latest rotor blade generations and easily masters them.





FTV 300

MANEUVERABLE AND FLEXIBLE



**YOUR BENEFITS**

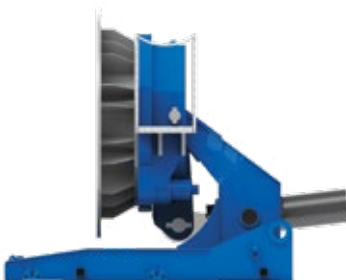
- ✓ Ballast weights to compensate for different blade weights
- » Cost effective transport solution for all customary rotor blades
- ✓ Interchangeable rotor blade adaptor
- » Extendable and adjustable for future hole-pattern variants
- ✓ Possible utilization as self-driven and towed modular chassis
- » Efficient in action

**TECHNICAL FEATURES**

- | | |
|--------------------------------|----------|
| + Alignment maximum angle | 60° |
| + Pitch angle | endless |
| + Maximum rotor blade diameter | 2,800 mm |
| + Dead weight | 12.6 t |
| + Ballast weight | 14 t |
| + Lifting torque | 300 mt |

**TRANSPORT ON THE VOLCANO**

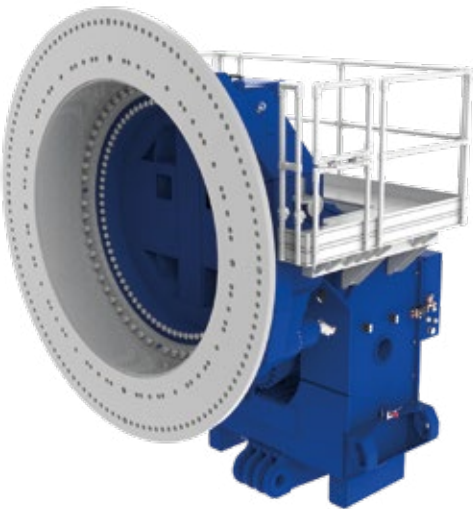
An order for seven Vestas V 112 wind turbines in Guatemala meant that the FTV 300 had to handle a serpentine-strewn, narrow mountain road lined with rocky outcrops and trees with inclines of up to 18% as well as declines of up to 13%.





FTV 550

SAFE AND TRIED AND TESTED HUNDREDS OF TIMES



**YOUR BENEFITS**

- ✓ Display for essential application parameters
- » Safe and reliable operating concept
- ✓ Installed between the modular chassis to reduce the total height
- » Very low centre of gravity for increased safety
- ✓ Closed in working platform
- » Safety at work when attaching the blades

**TECHNICAL FEATURES**

- | | |
|--------------------------------|----------|
| + Alignment maximum angle | 60° |
| + Pitch angle | endless |
| + Maximum rotor blade diameter | 3,400 mm |
| + Dead weight | 15.7 t |
| + Ballast weight | 18 t |
| + Lifting torque | 550 mt |



**CHALLENGE ACCEPTED**

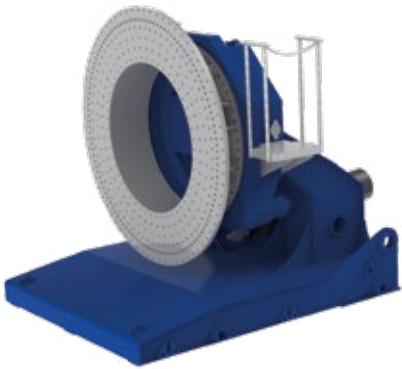
The route for a total of nine rotor blades included a distance of 8 km, passing through villages, corners and bends underneath high-voltage cables and was one of the first transports with the FTV 550 in Germany.



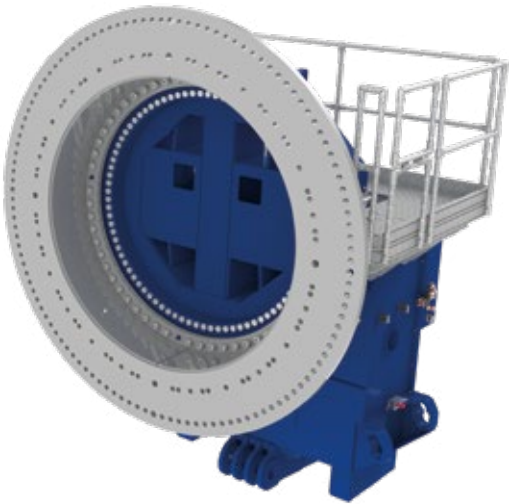
FTV 300 | FTV 550

TECHNICAL DATA

		FTV 300	FTV 550
 TECHNICAL DATA	Dead weight	12.6 t	15.7 t
	Ballast weight	14 t	18 t
	Lifting torque	300 mt	550 mt
	Alignment angle	60°	60°
	Pitch angle	Limitless	Limitless
 ACCESSORIES	+ Wind measuring on the blade tip + Remote radio control with axle pressure indicator and wind indicator + Railing for safe work on the adaptor + Access ladder		
	ROTOR BLADE ADAPTOR	+ FTV 300, dead weight 2.4 t for diameter up to 2,800 mm + FTV 550, dead weight 2.6 t for diameter up to 3,400 mm	



FTV 300



FTV 550

GOLDHOFER AKTIENGESELLSCHAFT

Donaustrasse 95, 87700 Memmingen/Germany
 Telephone: +49 8331 15-0, Fax: +49 8331 15-239
 Web: www.goldhofer.com, E-Mail: info@goldhofer.com

GOLDHOFER INC. | FLITELINE, LLC

7401 Riviera Boulevard, Miramar, FL 33023, USA
 Telephone: +1 954 433 5617, Fax: +1 954 433 5445
 Web: www.goldhofer.com, E-Mail: info@goldhofer.com
 Web: www.flitelineusa.com, E-Mail: info@flitelineusa.com

SALES

Telephone Sales Europe: +49 8331 15-341
 Telephone Sales International: +49 8331 15-342
 E-Mail: sales-transporttechnology@goldhofer.com

SERVICES AND SPARE PARTS

Telephone: +49 8331 15-400, Fax: +49 8331 15-247
 Emergency Hotline: +49 172 837 61 65
 E-Mail: service-transporttechnology@goldhofer.com

MADE FOR YOUR MISSION